

# Project Title



Presented By: Name

# PURPOSE STATEMENT

- Must be stated in a complete sentence. The purpose should be a question that you are trying to answer by doing an experiment. Typically a rewording of the topic or project title. It is usually written as “The purpose is to find out...”
- Add Pictures

# HYPOTHESIS

- Must be stated in a complete sentence. Your hypothesis is an educated guess of the answer to your purpose. The hypothesis must be formed prior to experiment. Remember, it is okay to be wrong after you complete the experiment. Don't go back and change your hypothesis. It is usually written as "The hypothesis of the experiment is..."

# MATERIALS

- List all materials, be specific and give quantities (measures). Do not put in paragraph style. Remember your project must be written in complete detail. Do not leave out any materials.
- Add Picture of Materials

# PROCEDURE

- Must be stated in a complete sentence. However, Do NOT put in paragraph style. List step by step direction of what you will be doing during your experiment. Be specific and detailed. Make sure to say that you are going to repeat experiment with different variables. Remember, your teacher should be able to do your experiment by following your directions without talking to you.
- PICTURES, PICTURES, PICTURE of you doing the experiment

# VARIABLES

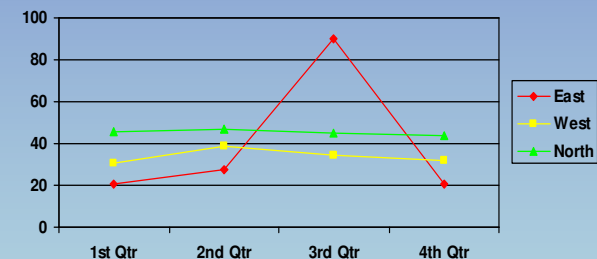
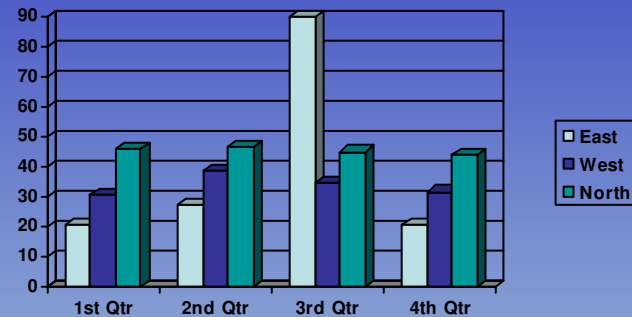
- Must be stated in a complete sentence.  
State the one or number of things that you are changing in the experiment or test.  
“What are you testing?”

# CONSTANTS

- Must be stated in a complete sentence. List everything that stayed the same in each experiment or trial.

# RESULTS

- Keep a record of all data for each time you complete or check on your experiment. You may keep a data log including the date and the results of each time you worked on or checked on your experiment. Your results must be written out in paragraph style. You must also make a graph/s (bar, line or circle) and table to show your results and data. Pictures may be used to supplement or validate experiment results. Make sure your teacher will understand the results of every time you repeated your experiment and the final results. Remember, this is NOT your conclusion. Do NOT state your final thought and validation of hypothesis.



	1st Qtr	2nd Qtr	3rd Qtr	4th Qtr
East	20.4	27.4	90	20.4
West	30.6	38.6	34.6	31.6
North	45.9	46.9	45	43.9

# CONCLUSION

- In a complete sentence tell whether your hypothesis was supported or not supported. Explain the final results and what they mean.
- Tell what you might do differently next time if you were to do this experiment again.
- **ADD PICTURES or GRAPHIC**